

IMAO
NF / F / NV / V
CAST IRON SPOKED HANDWHEELS
ROHS

NF

(Straight-Spoke
Without Handle-Mounting
Tapped Hole)


F

(Straight-Spoke
With Handle-Mounting Tapped Hole)

Note : Handle must be ordered separately.

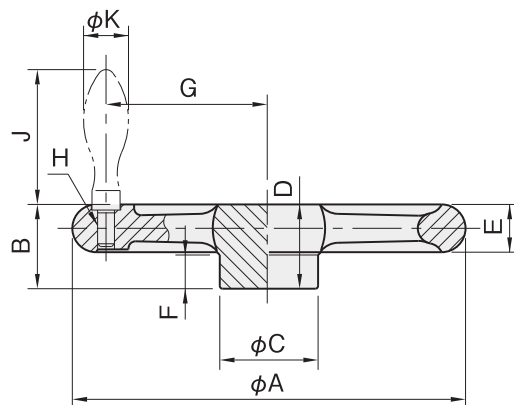

NV

(Angle-Spoke
Without Handle-Mounting
Tapped Hole)

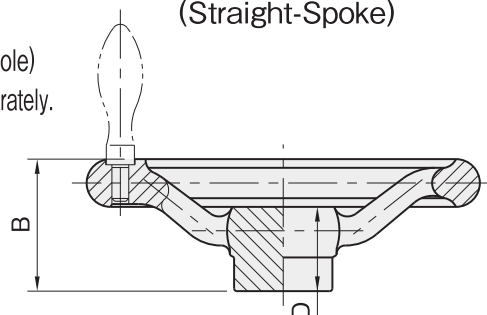

V

(Angle-Spoke
With Handle-Mounting Tapped Hole)

Note : Handle must be ordered separately.


NF F

(Straight-Spoke)


NV V

(Angle-Spoke)

Handwheel

Cast iron
Chrome plated

NF F (Straight-Spoke)

Part Number		No. of Spokes	A	B	C	D	E	F	For F	Type	Weight (g)
Without Handle-Mounting Tapped Hole	With Handle-Mounting Tapped Hole								G	H	
NF 80	F 80	3	80	24	25	24	14	9	30	M 5×0.8	350
NF100	F100		100	25	30	25	15		40		500
NF125	F125		125	29	35	29	16	12	51	M 6×1	850
NF140	F140		140	30		30	17		58		1,150
NF160	F160		160	33	38	33	18	13	67	M 8×1.25	1,500
NF180	F180		180	35		35	20		76		1,600
NF200	F200	5	200	37	40	37	22	14	84	M10×1.5	2,200
NF225	F225		225	39	45	39	24		95		2,900
NF250	F250		250	41		41	26		107		3,700
NF280	F280		280	43	53	43		16	122	M12×1.75	4,500
NF315	F315		315	45	60	45	28		138		5,900
NF355	F355		355	50	67	50	30	19	157	M16×2	7,800
NF400	F400		400	52		52	32		176		9,600
NF450	F450		450	60	72	60	34	23	200		12,800
NF500	F500		500		82				225		14,000


NV V (Angled-Spoke)

Part Number		No. of Spokes	A	B	C	D	E	F	For V Type		Weight (g)
Without Handle-Mounting Tapped Hole	With Handle-Mounting Tapped Hole								G	H	
NV 80	V 80	3	80	36	25	24	14	9	30	M 5×0.8	400
NV100	V100		100	40	30	25	15		40		520
NV125	V125		125	45	35	29	16	12	51	M 6×1	850
NV140	V140		140	47		30	17		58		1,050
NV160	V160		160	49	38	33	18	12	67	M 8×1.25	1,400
NV180	V180		180	53		35	20	14	76		1,700
NV200	V200		200	56	40	40	22		15	84	M10×1.5
NV225	V225	5	225	60	45		24	95		3,000	
NV250	V250		250	62		43	26	107	3,900		
NV280	V280		280	64	53		28	16	122	4,800	
NV315	V315		315	67	60	45			138	M12×1.75	5,900
NV355	V355		355	74	67	50	30	20	157	M16×2	7,800
NV400	V400		400	77		52	32		176		9,600
NV450	V450		450	87	72	60	34	26	200		13,900
NV500	V500		500	89	82			27	225		16,000

Handle Recommendations

Type / Size		Handle-Receiving Counterbore		Steel Fixed Handle			Steel Revolving Handle		
		Dia.	Depth	Part Number	J	K	Part Number	J	K
F V	80	8.5	2	SA13	38	13	-	-	-
	100								
	125	10.5	2	SA16	48	16	RA16	51	16
	140								
	160	13.5	2	SA20	62	20	RA20	65	20
	180								
	200	16.5	2	SA25	78	25	RA25	83	25
	225								
	250								
	280								
	315	20.5	2	SA32	98	32	RA32	105	32
	355	-	-	SA36	110	36	RA36	118	36
	400								
	450								
	500								

- Handwheel of 250mm or greater diameter has finger grips.
- F80 to F100 and V80 to V100 handwheels are available also with a **SRG10** or **SRG10S** stainless steel revolving handle
- Neither **NF** nor **NV** handwheels are provided with a handle-mounting tapped hole.
- 355 to 500 sizes of each type will be supplied in a new design once they run out of stock.

New Design

- **NF** 355 to 500 and **NV** 355 to 500 will be provided with a handle-mounting tapped hole which can be blocked up with a dedicated plug or a hex socket setscrew.
- **F** 355 to 500 and **V** 355 to 500 will still be provided with a handle-mounting tapped hole which no longer has the counterbore.