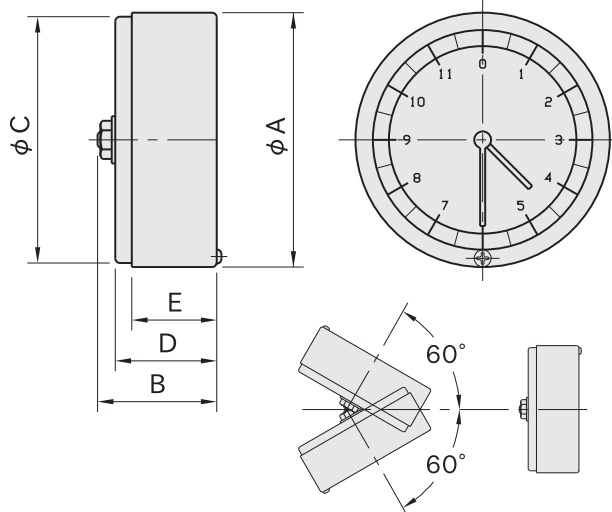
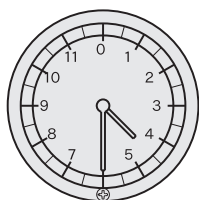


**D-R / D-L / D-C DIAL INDICATORS**


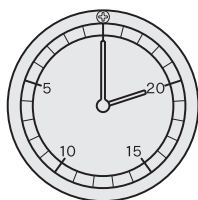
Angular Range of Mounting

Housing	Window	Dial Plate	Long Hand	Short Hand
Steel Black matte	Acrylic plastic	Aluminum (A1050P)	Red (printed on acrylic window)	Black

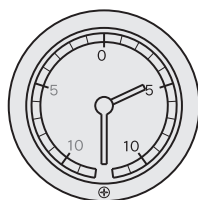
Part Number					Rotative Direction	A	B	C	D	E	Weight (g)
No. of Graduations : 12	No. of Graduations : 25	No. of Graduations : 30	No. of Graduations : 36	No. of Graduations : 64	Clockwise						
D50R1/12	D50R1/25	-	-	-	Counterclockwise	53.9	25	52.2	21.5	20	75
D50L1/12	D50L1/25	-	-	-	CW & CCW						
D50C12-12	-	-	-	-	Clockwise						
D75R1/12	D75R1/25	-	D75R1/36	D75R1/64	Counterclockwise	75.3	25	73.5	22	18	135
D75L1/12	D75L1/25	-	D75L1/36	D75L1/64	CW & CCW						
-	-	D75C30-30	-	-							

**Display Examples**


Type : Clockwise  
Graduations : 12  
Part No. : D75R1/12  
Display after 4-1/2 revolution



Type : Counterclockwise  
Graduations : 25  
Part No. : D75L1/25  
Display after 20 revolutions



Type : CW & CCW  
Graduations : 12  
Part No. : D50C12-12  
Display after 4-1/2 clockwise revolutions

**Technical Information**

For detailed installation instructions, see page of "IMAO INDICATOR HANDWHEELS & INDICATOR KNOBS".

- Allowable revolution speed : 300 min<sup>-1</sup>
- These indicators can mount onto **DHW** Indicator Handwheels, **DHK** Indicator Knobs, or **DRK** Knurled Indicator Knobs.
- The two-hands feature allows precisely reading the number of revolutions.
- Working temperatures range from -20°C to 60°C.  
The plastic window can be blurred with some steam caused by a big difference in working temperatures.
- Ensure that these indicators are completely kept away from water and dust.