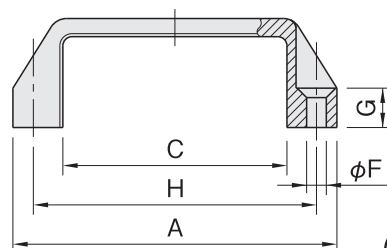
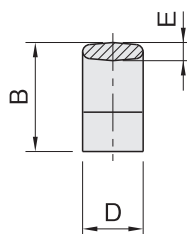
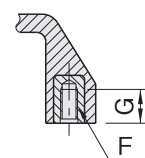


# AGS

# PLASTIC HANDLES



ELESA Original Design M.443 &amp; M.543

AGS-N  
(Front Mounting)AGS-N  
(Front Mounting)AGS-T  
(Back Mounting)AGS-T  
(Back Mounting)

Type	Handle	Insert
AGS-N	Glass-fiber reinforced polyamide plastic Black matte	-
AGS-T	Glass-fiber reinforced polyamide plastic Black or orange	Brass (C3604B)

## AGS-N (Front Mounting)

Black	A	B	C	D	E	F	G	H	Weight (g)
Part Number									
AGS110N	109	38	74	21	6	5.5	13	93.5	24
AGS130N	137	41	93	26	7	6.5	15	117	44
AGS200N	196	50	151	28	7.5		17	179	72

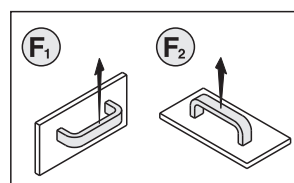
## AGS-T (Back Mounting)

Black	Orange	A	B	C	D	E	F	G	H	Weight (g)
Part Number	Part Number									
AGS130T6	AGS130T6-OG	134	38	102	25	7.5	M6×1	12	117	56
AGS130T8	AGS130T8-OG						M8×1.25	13		52
AGS150T8	-	150	45	116	26	8			132	59

## Strength Data

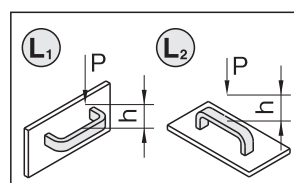
Part Number	F <sub>1</sub> [N]	F <sub>2</sub> [N]	L <sub>1</sub> [J]	L <sub>2</sub> [J]
AGS110N	2000	2200	16	6
AGS130N	2500	2300	17	7
AGS130T6	3000	1600	12	9
AGS130T8				
AGS150T8	2000	1800	18	16
AGS200N	2500	2400	22	15

- Working temperature : Between -30°C and 150°C for AGS-N type  
Between -30°C and 130°C for AGS-T type
- Dimensions can change depending on temperature and humidity (changed dimensions can be adjusted in slightly warm water).
- Use in hot or highly humid circumstances can deteriorate the plastic material properties.



## Tensile Stress

• The stated F<sub>1</sub> and F<sub>2</sub> values denote the average of the breaking loads measured in a breaking test under normal working conditions.



## Impact Strength

• The stated L<sub>1</sub> and L<sub>2</sub> values denote the average of the breaking loads measured in a drop test with a load of 6.7N.

※Some items are not RoHS-compliant. Contact us at [info@imao.jp](mailto:info@imao.jp) for the updated information.