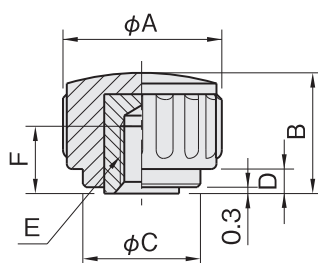
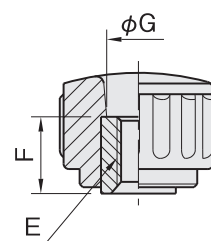
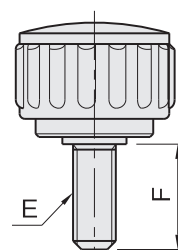



KN / KS
PLASTIC KNURLED TORQUE KNOBS


ELESA Original Design B. 193


KN
(Tapped Blind)

KN-T
(Tapped Through)

KS
(Stud)

KN
(Tapped Blind)

KN-T
(Tapped Through)

KS **KS-SUS**
(Stud)

Type	Knob	Insert	Stud
KN	Phenolic plastic Black	Brass (C3604B)	-
KN-T			-
KS		-	Steel (SUM22L) Zinc plated
KS-SUS			Stainless steel (SUS303)

KN (Tapped Blind)

Part Number	A	B	C	D	E	F	Weight (g)
KN15C	15	11	11	2	M 3×0.5	6	4
KN15					M 4×0.7		
KN15B					M 5×0.8	5	5
KN18	18	12	13	3	M 6×1	6	8
KN20	22	14	15	4			
KN25	26	18	19	6	M 8×1.25	10	13
KN30	31		24				20
KN35	36	23	27	8	M10×1.5	13	30
KN40	40	26	29	10		17	38
KN50A	50	32	36	12	M12×1.75	20	73
KN50B							80

 ※Some items are not RoHS-compliant. Contact us at info@imao.jp for the updated information.

**KN-T** (Tapped Through)

Part Number	A	B	C	D	E	F	G	Weight (g)
KN15T	15	11	11	2	M 4×0.7	10	6	4
KN18T	18	12	13	3	M 5×0.8		7	5
KN20T	22	14	15	4	M 6×1	11	8	8
KN25T	26	18	19	6		M 8×1.25	15	10
KN25TA					17			
KN30T	31		24		M10×1.5	13		21
KN30TA								24
KN40T	40	26	29	10		14	40	

KS **KS-SUS** (Stud)

Steel Stud	Stainless Steel Stud	A	B	C	D	E	F	Weight (g)
Part Number	Part Number							
KS15× 6C	KS15× 6C-SUS	15	11	11	2	M 3×0.5	6	3
KS15×10C	KS15×10C-SUS						10	4
KS15× 6A	KS15× 6A-SUS						6	3
KS15×10A	KS15×10A-SUS					M 4×0.7	10	4
KS15×16A	KS15×16A-SUS						16	5
KS15×10B	KS15×10B-SUS						10	
KS15×16B	KS15×16B-SUS					M 5×0.8	16	6
KS18×10	-	10	6					
KS18×16	-	16	7					
KS20×10	KS20×10 -SUS	22	14	15	4	M 6×1	10	9
KS20×16	KS20×16 -SUS						16	10
KS20×25	-						25	12
KS25×16	KS25×16 -SUS	26	19	18	6		16	14
KS25×25	KS25×25 -SUS						25	16
KS25×16A	-					16	20	
KS25×25A	-					25	23	
KS30×16	-					31	18	24
KS30×25	-	25	28					
KS30×40	-	40	32					
KS35×25	-	36	23	27	8	25	38	
KS35×40	-					40	42	
KS40×30	-	40	26	29	10	M10×1.5	30	59
KS50×40	-	50	32	36	12		40	94

· Working temperature : Between -20°C and 110°C