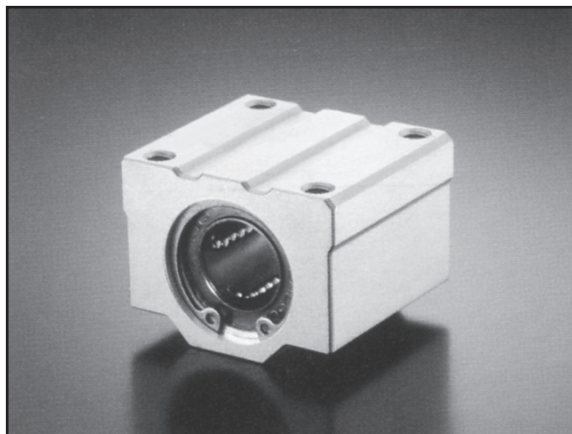


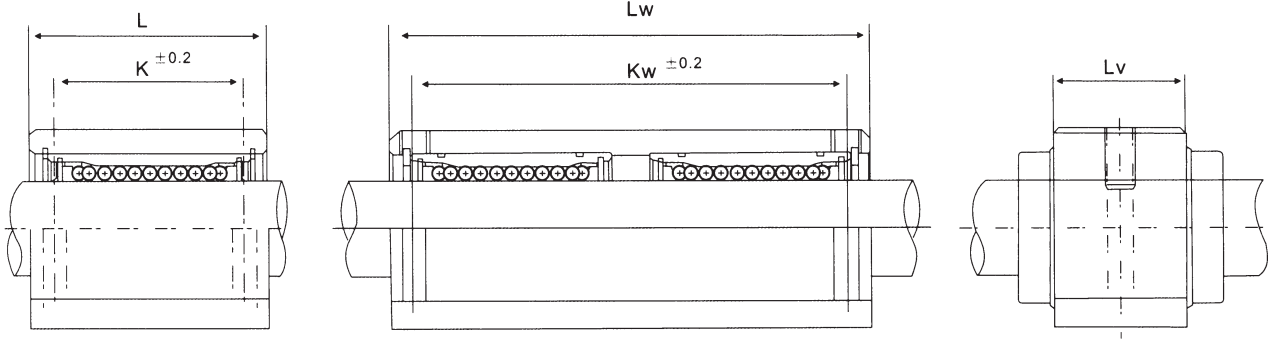
CASE UNIT

SC Series



Standard Type					Long Type					Short Type				
Part Number	Installed L/B	Load Ratings		Wgt. (g)	Part Number	Installed L/B	Load Ratings		Wgt. (g)	Part Number	Installed L/B	Load Ratings		Wgt. (g)
		C (N)	Co (N)				C (N)	Co (N)				C (N)	Co (N)	
SC8UUN	LM8UU	260	400	56	SC8WUUN	2XLM8UU	410	800	94	SC8VUUN	LM8UU	260	400	36
SC10UUN	LM10UU	370	540	90	SC10WUUN	2XLM10UU	590	1080	147	SC10VUUN	LM10UU	370	540	63
SC12UUN	LM12UU	410	590	112	SC12WUUN	2XLM12UU	650	1180	220	SC12VUUN	LM12UU	410	590	74
SC13UUN	LM13UU	500	770	123	SC13WUUN	2XLM13UU	800	1540	245	SC13VUUN	LM13UU	500	770	85
SC16UUN	LM16UU	770	1170	189	SC16WUUN	2XLM16UU	1230	2340	376	SC16VUUN	LM16UU	770	1170	132
SC20UUN	LM20UU	860	1370	237	SC20WUUN	2XLM20UU	1370	2740	476	SC20VUUN	LM20UU	860	1370	170
SC25UUN	LM25UU	980	1560	555	SC25WUUN	2XLM25UU	1560	3120	1115	SC25VUUN	LM25UU	980	1560	405
SC30UUN	LM30UU	1560	2740	685	SC30WUUN	2XLM30UU	2490	5480	1375	SC30VUUN	LM30UU	1560	2740	495
SC35UUN	LM35UU	1660	3130	1100	SC35WUUN	2XLM35UU	2650	6260	2200	SC35VUUN	LM35UU	1660	3130	790
SC40UUN	LM40UU	2150	4010	1600	SC40WUUN	2XLM40UU	3440	8020	3200	SC40VUUN	LM40UU	2150	4010	1220
SC50UUN	LM50UU	3820	7930	3350	SC50WUUN	2XLM50UU	6110	15860	6720	SC50VUUN	LM50UU	3820	7930	2300

CASE UNIT



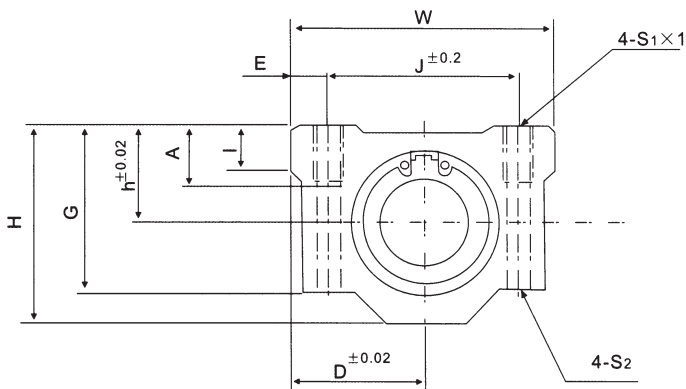
SC□N

SC□WN

SC□VN

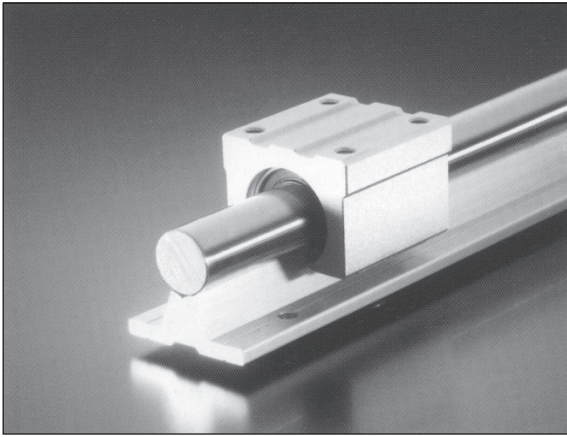
Dimensions(mm)																Part Number
Shaft Dia.	Common									SC		SC□W		SC□V		
	h	D	W	H	G	A	J	E	S1 x 1	S2	K	L	Kw	Lw	Lv	
Ø 8	11	17	34	22	18	6	24	5	M4 X 8	φ 3.4	18	30	42	58	15.4	SC8UUN
Ø 10	13	20	40	26	21	8	28	6	M5 X 12	φ 4.3	21	35	46	68	19.5	SC10UUN
Ø 12	15	21	42	28	24	7.4	30.5	5.75	M5 X 12	φ 4.3	26	36	50	70	20.5	SC12UUN
Ø 13	15	22	44	30	24.5	8	33	5.5	M5 X 12	φ 4.3	26	39	50	75	20.5	SC13UUN
Ø 16	19	25	50	38.5	32.5	9	36	7	M5 X 12	φ 4.3	34	44	60	85	23.5	SC16UUN
Ø 20	21	27	54	41	35	11	40	7	M6 X 12	φ 5.2	40	50	70	96	27.4	SC20UUN
Ø 25	26	38	76	51.5	41	12	54	11	M8 X 18	φ 6.8	50	67	100	130	37.4	SC25UUN
Ø 30	30	39	78	59.5	49	15	58	10	M8 X 18	φ 6.8	58	72	110	140	40.9	SC30UUN
Ø 35	34	45	90	68	54	18	70	10	M8 X 18	φ 6.8	60	80	120	155	45.4	SC35UUN
Ø 40	40	51	102	78	62	20	80	11	M10 X 25	φ 8.6	60	90	140	175	56.4	SC40UUN
Ø 50	52	61	122	102	80	24	100	11	M10 X 25	φ 8.6	80	110	160	215	68.9	SC50UUN

SI Unit 1N≒0.102kgf

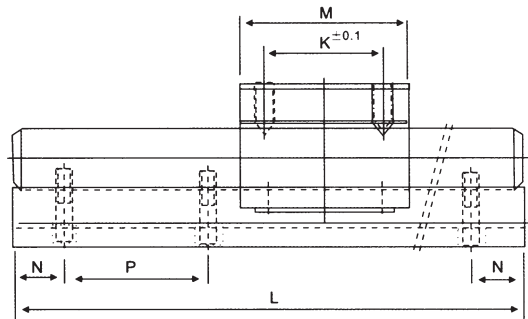
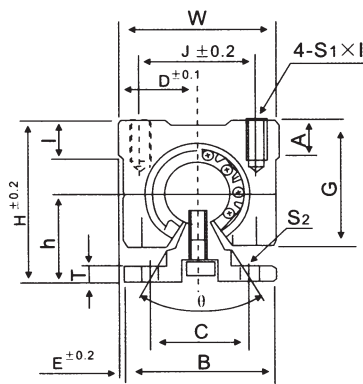
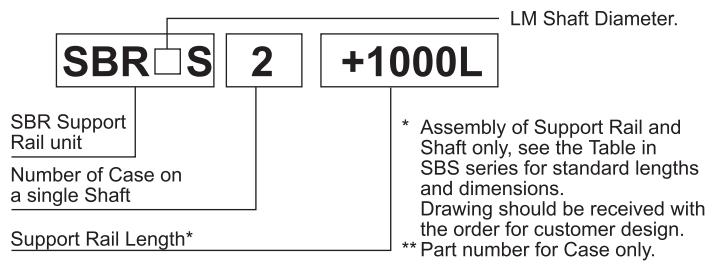


CASE UNIT

SBR□S Series



Part Number Notation



Part-Number		Shaft Dia.	Basic Load Ratings		Weight		Dimensions(mm)				
Unit	Case*		Dynamic C(N)	Static Co(N)	Case(kg)	Rail(kg/m)	D	H	H	E	θ
SBR16S	SBR16UU	∅ 16	770	1170	0.15	2.55	22.5	25	45	2.5	80°
SBR20S	SBR20UU	∅ 20	860	1370	0.20	3.50	24	27	50	1.5	60°
SBR25S	SBR25UU	∅ 25	980	1560	0.45	5.30	30	33	60	2.5	50°
SBR30S	SBR30UU	∅ 30	1560	2740	0.63	7.40	35	37	70	5	50°
SBR35S	SBR35UU	∅ 35	1660	3130	0.92	10.05	40	43	80	7.5	50°
SBR40S	SBR40UU	∅ 40	2150	4010	1.33	13.10	45	48	90	7.5	50°
SBR50S	SBR50UU	∅ 50	3820	7930	3.00	20.65	60	62	115	12.5	50°

Part Number	Dimensions(mm)												
	W	G	A	B	T	M	S1 X I	J	K	S2	C	N*	P*
SBR16S	45	33	9	40	5	45	M5 X12	32	30	∅ 5.5	30	20	150
SBR20S	48	39	11	45	5	50	M6 X12	35	35	∅ 5.5	30	20	150
SBR25S	60	47	14	55	6	65	M6 X12	40	40	∅ 6.6	35	25	200
SBR30S	70	56	15	60	7	70	M8 X18	50	50	∅ 6.6	40	25	200
SBR35S	80	63	18	65	8	80	M8 X18	55	55	∅ 9	45	30	200
SBR40S	90	72	20	75	9	90	M10 X 20	65	65	∅ 9	55	30	200
SBR50S	120	91	25	95	11	110	M10 X 20	94	80	∅ 11	70	35	200

*:Standard

1N= 0.102kgf