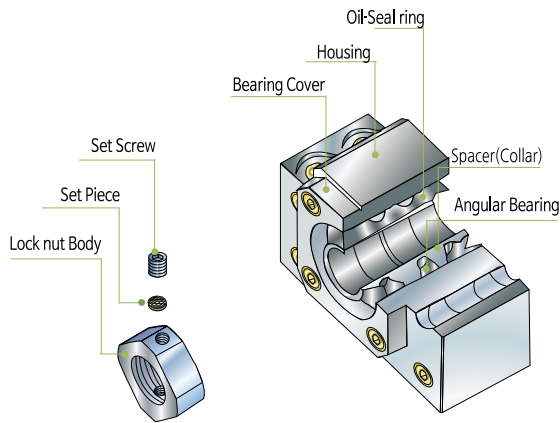


SUPPORT UNIT

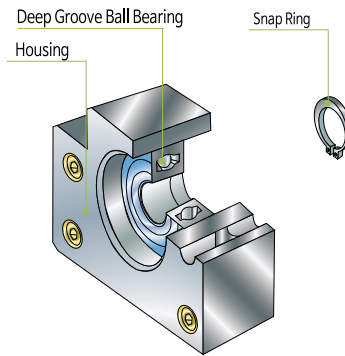
SUPPORT UNIT FOR BALL SCREW (GENERAL LOAD)

Structure



Fixed Side

- DF arrangement of angular contact ball bearing combinations
- Full ranges with high accuracy without runout according to adequate preload given in advance
- Prevention of foreign material and leak of grease by the inner oil-seal rings
- Accompanied by a high accuracy lock-nut and collars(spacer)



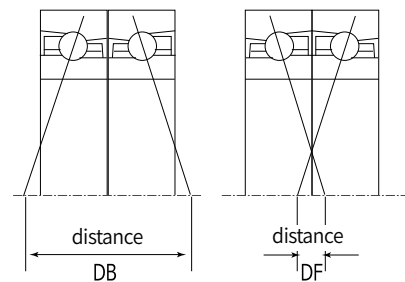
Supported Side

- Accompanied by a deep-groove ball bearing and a snap-ring

Bearing Combinations

1. Arrangement types of angular contact ball bearing combinations

- 1) DB combination (back to back): The large distance between the effective load centers results in higher rigidity at the moment load. However if accuracy of housing is not enough, it may produce damage e.g. flaking at a earlier stage due to the increased internal load. Preload is determined by torque when the user fastens the lock-nut.
- 2) DF combination (face to face): The small distance between effective load centers limits bearing capacity to sustain moment load, however it performs at a better level to absorb the margin of assembly error. Preload is determined at maker's assembly of bearing cover, thus this way allows easier self-management for users.

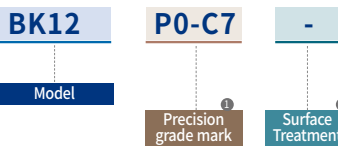


2. Standard arrangement type of Sung-il products is DF combination.

※ In any case DB combination type is requested, please contact Sung-il Customer Service team for further assistance.

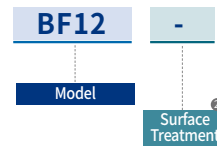
How to Order

Fixed Side



① Precision grade mark	Mark (Fixed Side Only)	Bearing precision grade	Preload
	P5	P5	Medium
	C8	General	Medium
	P0-C7	General	Light

Supported Side



② Surface Treatment	mark	Surface Treatment
	no mark	Black Oxide
	RA	Low temperature Black Chrome Plating (Raydent)

SUPPORT UNIT

SUPPORT UNIT FOR BALL SCREW (GENERAL LOAD)

List of Bearings (Fixed Side)

Bearing Inner dia. (mm)	Model					Bearing		
	EK	BK	AK	FK	CK	P5	C8	P0-C7
Ø4	EK4			FK4		AC-4-12-DF		634ZZ
Ø5	EK5			FK5		AC-5-14-DF		625ZZ
Ø6	EK6			FK6		706ATYNDFMP5	706ATYNDFC8	606ZZ
		BK6						EN6
Ø8	EK8			FK8	CK8	708ATYNDFMP5	708ATYNDFC8	EN8/BA22-1
		BK8						EN8/BA22-1
			AK8			708ATYNDFMP5		
Ø10	EK10	BK10	AK10	FK10	CK10	7000ATYNDFMP5	7000AWDFM	7000AW
Ø12	EK12	BK12	AK12	FK12	CK12	7001ATYNDFMP5	7001AWDFM	7001AW
Ø15	EK15	BK15	AK15	FK15	CK15	7002ATYNDFMP5	7002AWDFM	7002AW
Ø17		BK17		FK17		7203ATYNDFMP5	7203AWDFM	7203AW
Ø20	EK20		AK20	FK20		7204ATYNDFMP5	7204AWDFM	7204AW
		BK20				7004ATYNDFMP5	7004AWDFM	7004AW
Ø25	EK25	BK25		FK25		7205ATYNDFMP5	7205AWDFM	7205AW
Ø30		BK30		FK30		7206ATYNDFMP5	7206AWDFM	7206AW
Ø35		BK35		FK35		7207ATYNDFMP5	7207AWDFM	7207AW
Ø40		BK40		FK40		7208ATYNDFMP5	7208AWDFM	7208AW

List of Bearings (Supported Side)

Bearing Inner dia. (mm)	Model					Bearing
	EF	BF	AF	FF	CF	
Ø6	EF6/EF8	BF6/BF8	AF8	FF6/FF8	CF8	606ZZ
Ø8	EF10	BF10	AF10	FF10		608ZZ
Ø10	EF12	BF12	AF12	FF12	CF10/CF12	6000ZZ
Ø15	EF15	BF15	AF15	FF15	CF15	6002ZZ
Ø17		BF17		FF17		6203ZZ
Ø20	EF20		AF20	FF20		6204ZZ
		BF20				6004ZZ
Ø25	EF25	BF25		FF25		6205ZZ
Ø30		BF30		FF30		6206ZZ
Ø35		BF35		FF35		6207ZZ
Ø40		BF40		FF40		6208ZZ

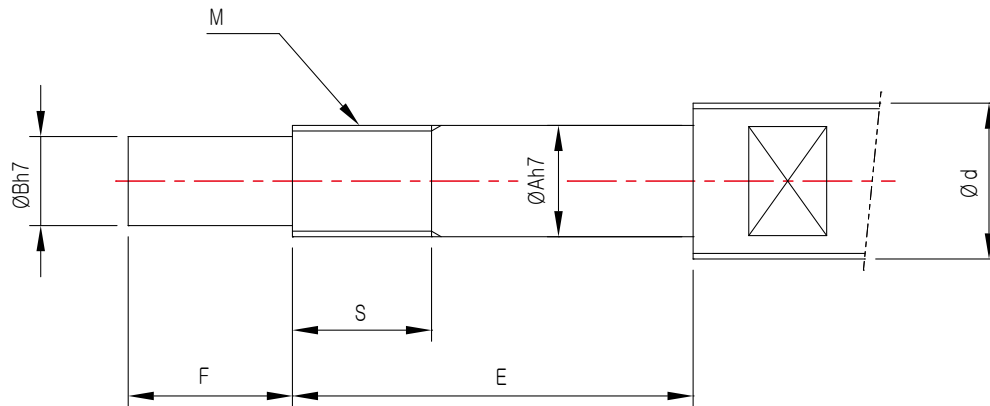
Product Recommendation by Ball Screw Outer Diameters

Ball Screw Outer dia. (mm)	Fixed Side					Supported Side				
	EK	BK	AK	FK	CK	EF	BF	AF	FF	CF
Ø6	EK4			FK4						
Ø8	EK5/EK6	BK6		FK5/FK6		EF6	BF6		FF6	
Ø10, Ø12	EK8	BK8	AK8	FK8	CK8	EF8	BF8	AF8	FF8	CF8
Ø10, Ø12, Ø15	EK10	BK10	AK10	FK10	CK10	EF10	BF10	AF10	FF10	CF10
Ø14, Ø15, Ø16, Ø18	EK12	BK12	AK12	FK12	CK12	EF12	BF12	AF12	FF12	CF12
Ø20	EK15	BK15	AK15	FK15	CK15	EF15	BF15	AF15	FF15	CF15
		BK17		FK17			BF17		FF17	
Ø25, Ø28	EK20	BK20	AK20	FK20		EK20	BF20	AF20	FF20	
Ø30, Ø32, Ø36	EK25	BK25		FK25		EF25	BF25		FF25	
Ø40		BK30		FK30			BF30		FF30	
Ø45		BK35		FK35			BF35		FF35	
Ø50~Ø55		BK40		FK40			BF40		FF40	

SUPPORT UNIT

SUPPORT UNIT FOR BALL SCREW (GENERAL LOAD)

Recommended Shape Of Ball Screw Shaft-End (Fixed Side)

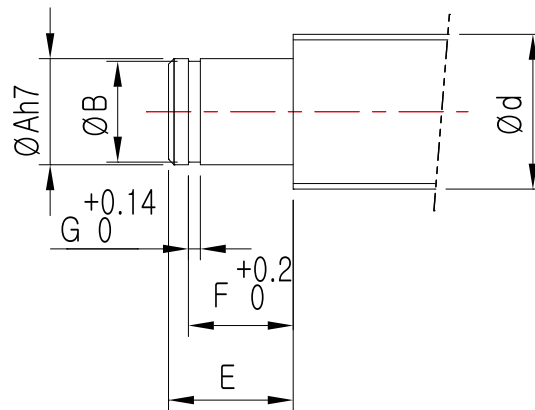


Dimensions(mm)																				Lock-nut				
d	A	B	EK			BK				AK				FK				CK				Model	Size (MxPitch)	
			Model	E	F	S	Model	E	F	S	Model	E	F	S	Model	E	F	S	Model	E	F			S
Ø6	4	3	EK4	23	5	8																	RN4	M4 x 0.5
Ø8	5	4	EK5	25	6	8																	RN5	M5 x 0.5
	6	4	EK6	30	8	8	BK6	30	8	8													RN6	M6 x 0.75
Ø10 - Ø12	8	6	EK8	35	9	10	BK8	35	9	10	AK8	30	9	10	FK8	35	9	10	CK8	34	9	10	RN8	M8 x 1/0.75
Ø10 - Ø15	10	8	EK10	36	15	11	BK10	39	15	16	AK10	36	15	11	FK10	36	15	11	CK10	36	15	11	RN10	M10 x 1/0.75
Ø14 - Ø18	12	10	EK12	36	15	11	BK12	39	15	14	AK12	36	15	11	FK12	36	15	11	CK12	36	15	11	RN12	M12 x 1
Ø20	15	12	EK15	49	20	13	BK15	40	20	12	AK15	49	20	13	FK15	49	20	13	CK15	49	20	13	RN15	M15 x 1
Ø25 - Ø28	17	15					BK17	53	23	17					FK17	57	23	17					RN17	M17 x 1
	20	17	EK20	64	25	17	BK20	53	25	16	AK20	64	25	17	FK20	64	25	17					RN20	M20 x 1
Ø30 - Ø36	25	20	EK25	76	30	22	BK25	65	30	19					FK25	76	30	20					RN25	M25 x 1.5
Ø40	30	25					BK30	72	38	25					FK30	72	38	25					RN30	M30 x 1.5
Ø45	35	30					BK35	83	45	28					FK35	83	45	28					RN35	M35 x 1.5
Ø50 - Ø55	40	35					BK40	98	50	35					FK40	98	50	35					RN40	M40 x 1.5

SUPPORT UNIT

SUPPORT UNIT FOR BALL SCREW (GENERAL LOAD)

Recommended Shape Of Ball Screw Shaft-End (Supported Side)



Dimensions(mm)										
d	EF	BF	AF	FF	CF	A	E	B	F	G
Ø8	EF6	BF6		FF6		6	9	5.6	6.9	0.9
Ø10 - Ø12	EF8	BF8	AF8	FF8	CF8	6	9	5.6	6.9	0.9
Ø10 - Ø15	EF10	BF10	AF10	FF10		8	10	7.6	7.9	0.9
Ø14 - Ø18	EF12	BF12	AF12	FF12	CF12	10	11	9.6	9.15	1.15
Ø20	EF15	BF15	AF15	FF15	CF15	15	13	14.3	10.15	1.15
Ø25 - Ø28		BF17		FF17		17	16	16.2	13.15	1.15
	EF20	BF20	AF20	FF20		20	19(16)	19	15.35(13.35)	1.35
Ø30 - Ø36	EF25	BF25		FF25		25	20	23.9	16.35	1.35
Ø40		BF30		FF30		30	21	28.6	17.75	1.75
Ø45		BF35		FF35		35	22	33	18.75	1.75
Ø50 - Ø55		BF40		FF40		40	23	38	19.95	1.95

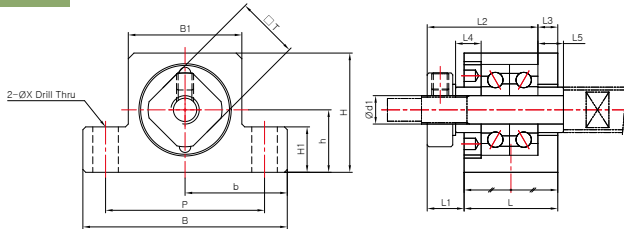
※ The values in brackets are for model no. BF-20.

SUPPORT UNIT : EK SERIES

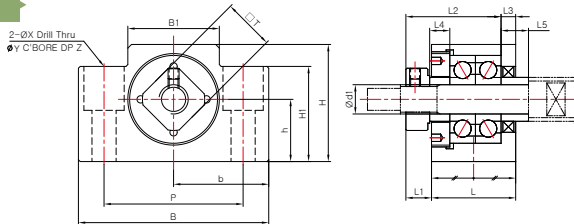


SUPPORT UNIT FOR BALL SCREW (GENERAL LOAD)

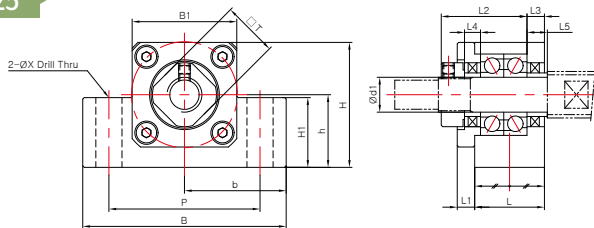
EK4 ~ EK5



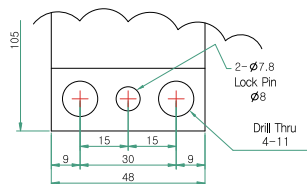
EK6 ~ EK8



EK10 ~ EK25



Additional note for [EK-25]



Dimensions

Model	Sizes (mm)																	Mass (g)	
	Body															Spacer(collar)			
	d1	L	L1	L2	L3	B	H	b±0.02	h±0.02	B1	H1	P	X	Y	Z	□T	L4		L5
EK4 P5/P0-C7	4	15	5.5	17.5/18.5	3/2	34	19	17	10	18	7	26	4.5	-	-	10	4.5/3.5	4.5/3.5	50
EK5 P5/P0-C7	5	16.5	5.5/6.5	19.5	3.5	36	21	18	11	20	8	28	4.5	-	-	11	5.5/4.5	5.5/4.5	68
EK6	6	20	5.5	22	3.5	42	25	21	13	18	20	30	5.5	9.5	11	12	5	7	120
EK8	8	23	7	26	4	52	32	26	17	25	26	38	6.6	11	12	14	5.5	7.5	230
EK10	10	24	6	29.5	6	70	43	35	25	36	24	52	9	-	-	16	5.5	5.5	430
EK12	12	24	6	29.5	6	70	43	35	25	36	24	52	9	-	-	19	5.5	5.5	420
EK15	15	25	6	36	5	80	50	40	30	41	25	60	11	-	-	22	10	10	530
EK20	20	42	10	50	10	95	58	47.5	30	56	25	75	11	-	-	30	11	11	1310
EK25	25	48	13	59	14	105	68	52.5	35	66	25	85	<See the additional note above>			35	14	14	1950

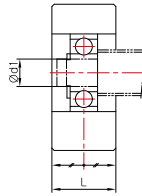
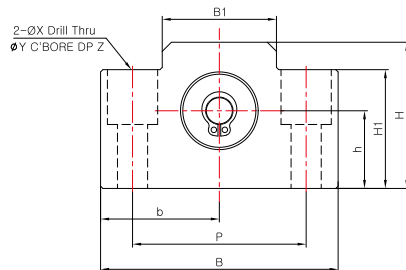
※ Only EK-4 and EK-5 have different dimensions according to the bearing grade (P5/P0-C7).

SUPPORT UNIT : EF SERIES

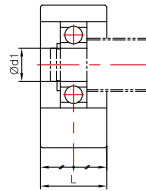
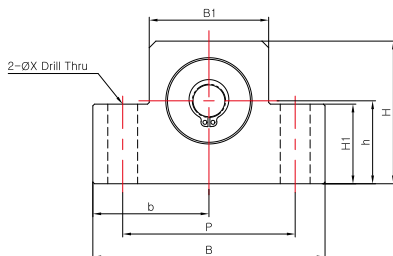


SUPPORT UNIT FOR BALL SCREW (GENERAL LOAD)

EF6 ~ EF8



EF10 ~ EF25



Dimensions

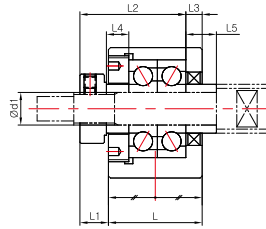
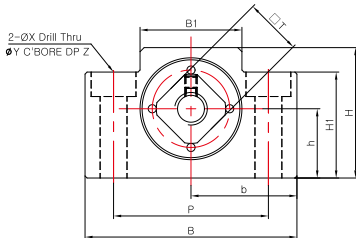
Model	Sizes (mm)												Mass (g)	Snap-ring	Bearing
	Body														
	d1	L	B	H	b±0.02	h±0.02	B1	H1	P	X	Y	Z			
EF6	6	12	42	25	21	13	18	20	30	5.5	9.5	11	120	C6	606ZZ
EF8	6	14	52	32	26	17	25	26	38	6.6	11	12	230	C6	606ZZ
EF10	8	20	70	43	35	25	36	24	52	9	-	-	430	C8	608ZZ
EF12	10	20	70	43	35	25	36	24	52	9	-	-	420	C10	6000ZZ
EF15	15	20	80	50	40	30	41	25	60	9	-	-	530	C15	6002ZZ
EF20	20	26	95	58	47.5	30	56	25	75	11	-	-	1310	C20	6204ZZ
EF25	25	30	105	68	52.5	35	66	25	85	11	-	-	1950	C25	6205ZZ

SUPPORT UNIT : BK SERIES

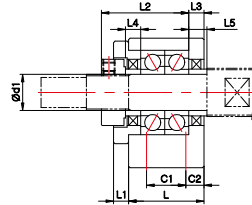
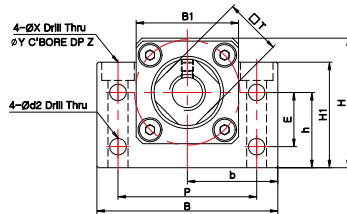


SUPPORT UNIT FOR BALL SCREW (GENERAL LOAD)

BK6 ~ BK8



BK10 ~ BK40



Dimensions

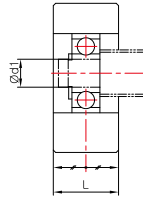
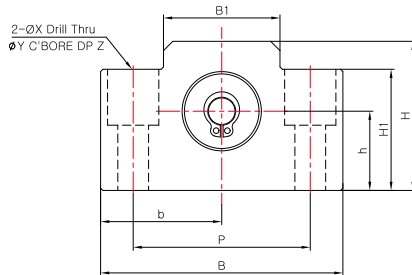
Model	Sizes (mm)																				Mass (g)		
	Body																			Spacer(collar)			
	d1	L	L1	L2	L3	B	H	b±0.02	h±0.02	B1	H1	E	P	C1	C2	d2	X	Y	Z	□T		L4	L5
BK6	6	23	5	24	4	52	32	26	17	25	26	-	38	-	-	-	6.6	11	6	12	5	5	230
BK8	8	23	7	26	4	52	32	26	17	25	26	-	38	-	-	-	6.6	11	6	14	5.5	7.5	230
BK10	10	25	5	29	5	60	39	30	22	34	32.5	15	46	13	6	5.5	6.6	10.8	5	16	5	5	360
BK12	12	25	5	29	5	60	43	30	25	34	35	18	46	13	6	5.5	6.6	10.8	6	19	5	5	390
BK15	15	27	6	32	6	70	48	35	28	40	38	18	54	15	6	5.5	6.6	11	6	22	6	6	530
BK17	17	35	9	44	7	86	64	43	39	50	55	28	68	19	8	6.6	9	14	8.5	24	7	7	1270
BK20	20	35	8	43	8	88	60	44	34	52	50	22	70	19	8	6.6	9	14	8.5	30	8	8	1650
BK25	25	42	12	54	9	106	80	53	48	64	70	33	85	22	10	9	11	17.5	11	35	9	9	2310
BK30	30	45	14	61	9	128	89	64	51	76	78	33	102	23	11	11	14	20	13	40	9	9	3330
BK35	35	50	14	67	12	140	96	70	52	88	79	35	114	26	12	11	14	20	13	50	12	12	4380
BK40	40	61	18	76	15	160	110	80	60	100	90	37	130	33	14	14	18	26	17.5	50	15	15	6670

SUPPORT UNIT : BF SERIES

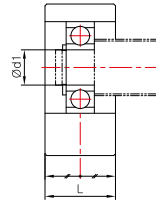
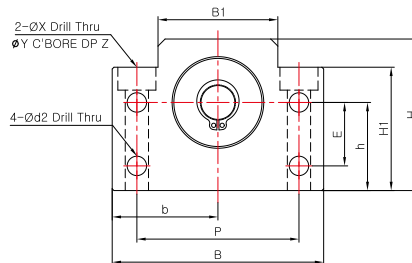


SUPPORT UNIT FOR BALL SCREW (GENERAL LOAD)

BF6 ~ BF8



BF10 ~ BF40



Dimensions

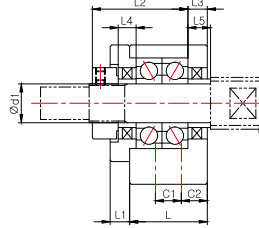
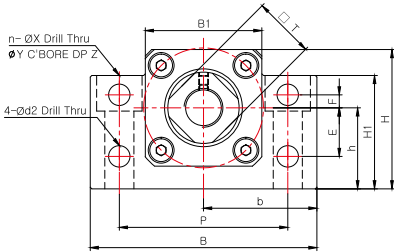
Model	Sizes (mm)														Mass (g)	Snap-ring	Bearing
	Body																
	d1	L	B	H	b±0.02	h±0.02	B1	H1	E	P	d2	X	Y	Z			
BF6/BF8	6	14	52	32	26	17	25	26	-	38	-	6.6	11	12	120	C6	606ZZ
BF10	8	20	60	39	30	22	34	32.5	15	46	5.5	6.6	10.8	5	260	C8	608ZZ
BF12	10	20	60	43	30	25	34	35	18	46	5.5	6.6	10.8	6.5	270	C10	6000ZZ
BF15	15	20	70	48	35	28	40	38	18	54	5.5	6.6	11	6.5	310	C15	6002ZZ
BF17	17	23	86	64	43	39	50	55	28	68	6.6	9	14	8.5	680	C17	6203ZZ
BF20	20	26	88	60	44	34	52	50	22	70	6.6	9	14	8.5	710	C20	6004ZZ
BF25	25	30	106	80	53	48	64	70	33	85	9	11	17.5	11	1340	C25	6205ZZ
BF30	30	32	128	89	64	51	76	78	33	102	11	14	20	13	1880	C30	6206ZZ
BF35	35	32	140	96	70	52	88	79	35	114	11	14	20	13	2080	C35	6207ZZ
BF40	40	37	160	110	80	60	100	90	37	130	14	18	26	17.5	3100	C40	6208ZZ

SUPPORT UNIT : AK/AF SERIES



SUPPORT UNIT FOR BALL SCREW (GENERAL LOAD)

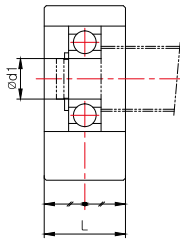
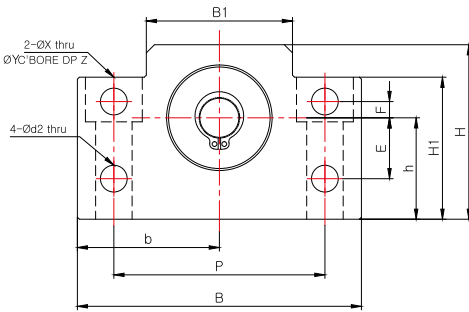
AK8 ~ AK20



Dimensions

Model	Sizes (mm)																							Mass (g)	
	Body																				Spacer(collar)				
	d1	L	L1	L2	L3	B	H	b±0.02	h±0.02	B1	H1	E	F	P	C1	C2	d2	n	X	Y	Z	□T	L4		L5
AK8	8	20	3	24.5	4	52	32	26	17	25	26	10	4	38	-	10	5.5	2	6.6	11	12	14	4	4	190
AK10	10	24	6	29.5	6	70	43	35	25	36	35	15	4	52	-	12	6.6	2	9	14	11	16	5.5	5.5	450
AK12	12	24	6	29.5	6	70	43	35	25	36	35	15	4	52	-	12	6.6	2	9	14	11	19	5.5	5.5	440
AK15	15	25	6	36	5	80	50	40	30	41	40	15	4	60	-	12.5	6.6	2	11	17	15	22	10	10	570
AK20	20	42	10	50	10	95	58	47.5	30	56	45	-	-	75	22	10	-	4	11	17	15	30	11	11	1400

AF8 ~ AF20



Dimensions

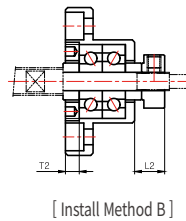
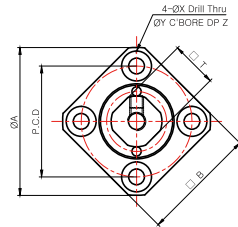
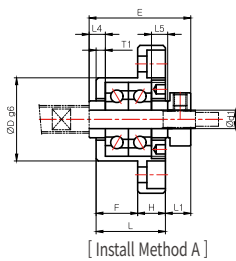
Model	Sizes (mm)															Mass (g)	Snap-ring	Bearing
	Body																	
	d1	L	B	H	b±0.02	h±0.02	B1	H1	E	F	P	d2	X	Y	Z			
AF8	6	15	52	32	26	17	25	26	10	4	38	5.5	6.6	11	12	130	C6	606ZZ
AF10	8	20	70	43	35	25	36	35	15	4	52	6.6	9	14	11	320	C8	608ZZ
AF12	10	20	70	43	35	25	36	35	15	4	52	6.6	9	14	11	330	C10	6000ZZ
AF15	15	20	80	50	40	30	41	40	15	4	60	6.6	9	14	11	370	C15	6002ZZ
AF20	20	26	95	58	47.5	30	56	45	-	-	75	-	11	17	15	660	C20	6204ZZ

SUPPORT UNIT : FK SERIES

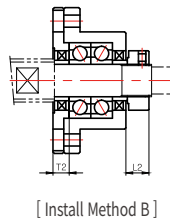
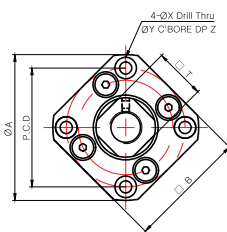
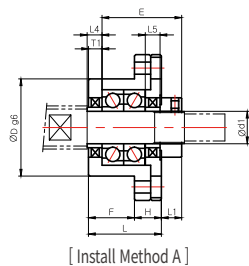


SUPPORT UNIT FOR BALL SCREW (GENERAL LOAD)

FK4 ~ FK8



FK10 ~ FK30



※ Additional note for [FK-30]

In case of choosing "Install Method B", size of spacer(collar) needs to be accordingly changed. Please contact Sung-il Customer Service team for more details.

Dimensions

Model	Sizes (mm)																	Mass (g)		
	Body															Spacer(collar)				
	d1	L	H	F	E	D	A	P.C.D	□B	Install Method A		Install Method B		X	Y	Z	□T		L4	L5
									L1	T1	L2	T2								
FK4 P5/P0-C7	4	15	6	9	22	18	32	24	25	5.5	3/2	6.5	4/3	3.4	6	4	10	4.5/3.5	4.5/3.5	40
FK5 P5/P0-C7	5	16.5	6	10.5	24	20	34	26	26	5.5/6.5	3.5	7/6	5/3	3.4	6/6.5	4	11	5.5/4.5	5.5/4.5	50
FK6	6	20	7	13	29	22	36	28	28	5.5	3.5	8.5	4.5	3.4	6.5	4	12	7	5	65
FK8	8	23	9	14	33.5	28	43	35	35	7	4	10	5	3.4	6.5	4	14	7.5	5.5	125
FK10	10	27	10	17	29.5	34	52	42	42	7.5	5	8.5	6	4.5	8	4	16	5.5	5.5	200
FK12	12	27	10	17	29.5	36	54	44	44	7.5	5	8.5	6	4.5	8	4	19	5.5	5.5	225
FK15	15	32	15	17	36	40	63	50	52	10	6	12	8	5.5	9.5	6	22	10	10	340
FK17	17	45	22	23	46	50	77	62	61	10	9	13	12	6.6	11	10	24	9	9	770
FK20	20	52	22	30	50	57	85	70	68	8	10	12	14	6.6	11	10	30	11	11	1065
FK25	25	57	27	30	60	63	98	80	79	13	10	20	17	9	15	13	35	15	15	1465
FK30	30	62	30	32	61	75	117	95	93	11	12	21	18	11	17.5	15	40	9	9	2300

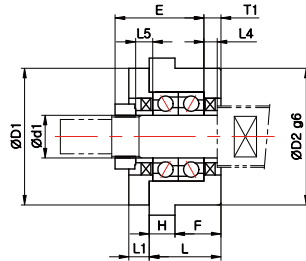
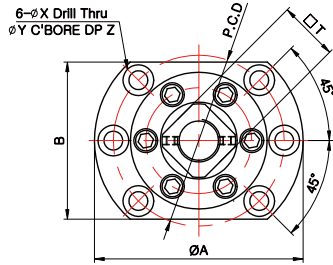
※ Only FK-4 and FK-5 have different dimensions according to the bearing grade (P5/P0-C7).

SUPPORT UNIT : FK SERIES

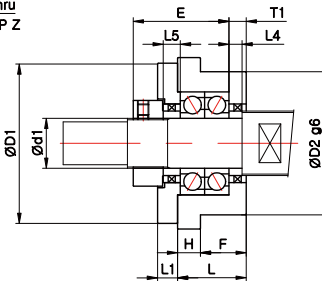
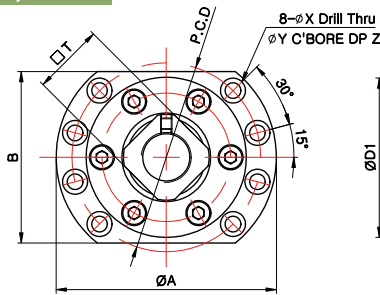


SUPPORT UNIT FOR BALL SCREW (GENERAL LOAD)

FK25D, FK30D



FK35, FK40



Dimensions

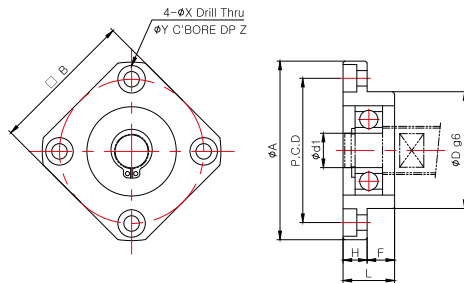
Model	Sizes (mm)																		Mass (g)
	Body																Spacer(collar)		
	d1	L	H	F	E	D1	D2	A	P.C.D	B	L1	T1	X	Y	Z	□T	L4	L5	
FK25D	25	42	15	27	52	80	80	122	100	92	12	10	11	18	11	35	10	10	2500
FK30D	30	45	15	30	59	96	90	138	116	106	14	11	11	18	11	40	11	11	3500
FK35	35	48	16	32	67	112	100	154	132	120	14	12	11	17.5	11	50	12	12	4080
FK40	40	61	18	43	76	126	120	176	150	128	18	16	14	20	13	50	15	15	6750

SUPPORT UNIT : FF SERIES



SUPPORT UNIT FOR BALL SCREW (GENERAL LOAD)

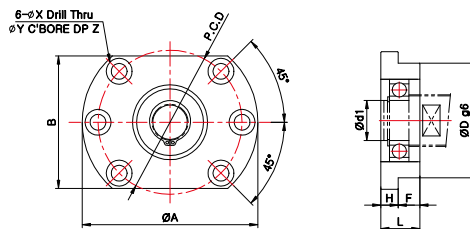
FF6 ~ FF30



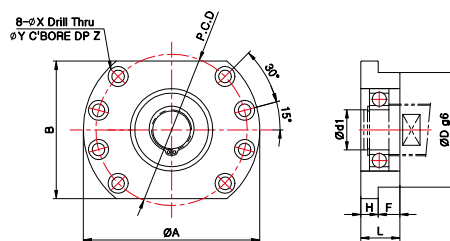
Dimensions

Model	Sizes (mm)											Mass (g)	Snap-ring	Bearing
	Body													
	d1	L	H	F	D	A	P.C.D	□B	X	Y	Z			
FF6/FF8	6	10	6	4	22	36	28	28	3.4	6.5	3	30	C6	606ZZ
FF10	8	12	7	5	28	43	35	35	3.4	6.5	4	60	C8	608ZZ
FF12	10	15	7	8	34	52	42	42	4.5	8	4	100	C10	6000ZZ
FF15	15	17	9	8	40	63	50	52	5.5	9.5	5.5	140	C15	6002ZZ
FF17	17	20	11	9	50	77	62	61	6.6	11	6.5	290	C17	6203ZZ
FF20	20	20	11	9	57	85	70	68	6.6	11	6.5	380	C20	6204ZZ
FF25	25	24	14	10	63	98	80	79	9	14	8.5	590	C25	6205ZZ
FF30	30	27	18	9	75	117	95	93	11	17.5	11	930	C30	6206ZZ

FF25D, FF30D



FF35, FF40



Dimensions

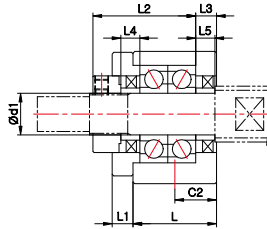
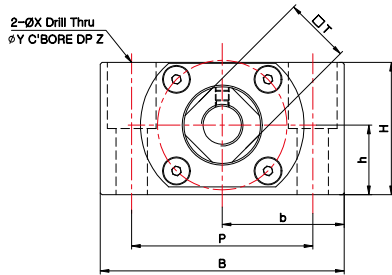
Model	Sizes (mm)											Mass (g)	Snap-ring	Bearing
	Body													
	d1	L	H	F	D	A	P.C.D	□B	X	Y	Z			
FF25D	25	30	15	15	80	122	100	92	11	18	11	1400	C25	6205ZZ
FF30D	30	32	15	17	90	138	116	106	11	18	11	1800	C30	6206ZZ
FF35	35	34	15	19	100	154	132	120	11	17.5	11	2050	C35	6207ZZ
FF40	40	36	18	18	120	176	150	128	14	20	13	3050	C40	6208ZZ

SUPPORT UNIT : CK/CF SERIES (Low-Centered Type)



SUPPORT UNIT FOR BALL SCREW (GENERAL LOAD)

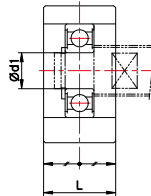
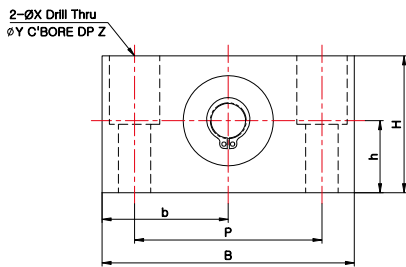
CK8~CK15



Dimensions

Model	Sizes (mm)																Mass (g)	
	Body														Spacer(collar)			
	d1	L	L1	L2	L3	B	H	b±0.02	h±0.02	P	C2	X	Y	Z	□T	L4		L5
CK8	8	21.5	4	26.5	3.5	62	31	31	15.5	46	11	9	14	18	14	6	6	260
CK10	10	24	6	29.5	6	70	38	35	20	52	12	9	14	19	16	5.5	5.5	430
CK12	12	24	6	29.5	6	70	38	35	20	52	12	9	14	19	19	5.5	5.5	430
CK15	15	25	6	38	5	80	42	40	22	60	12.5	11	17	23	22	10	10	540

CF8~CF15



Dimensions

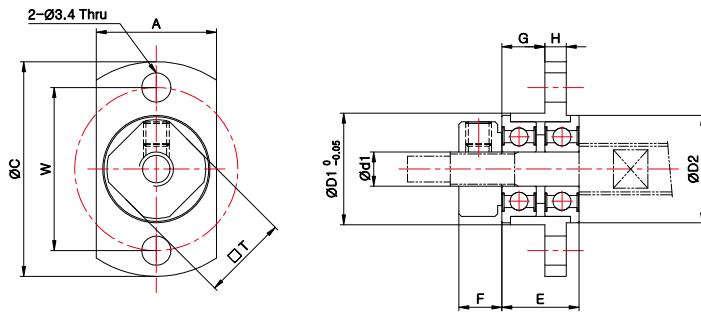
Model	Sizes (mm)										Mass (g)	Snap-ring	Bearing
	Body												
	d1	L	B	H	b±0.02	h±0.02	P	X	Y	Z			
CF8	6	16	62	31	31	15.5	46	9	14	18	165	C6	606ZZ
CF10	10	20	70	38	35	20	52	9	14	19	285	C10	6000ZZ
CF12	10	20	70	38	35	20	52	9	14	19	285	C10	6000ZZ
CF15	15	20	80	42	40	22	60	9	14	23	355	C15	6002ZZ

SUPPORT UNIT : WBK SERIES (Miniature Type)



SUPPORT UNIT FOR BALL SCREW (GENERAL LOAD)

WBK04, WBK06



- ※ Make sure the lock-nut is fastened fully due to frequent detachment of flange shaped miniature ball bearing.
- ※ Spacer(collar) are mounted on the body at release for the loss prevention.

Dimensions

Model	Sizes (mm)												
	Body											Lock-nut	Spacer(collar)
	d1	A	C	D1	D2	E	F	G	H	W	T	M	
WBK04	4	14	25	13	12.5	9	5	5	2.5	19	10	M4×0.5	Ø8×Ø4×1 - 1EA
WBK06	6	19	30	18	17	11	5	6.8	2.5	24	12	M6×0.75	Ø9.1×Ø6×1 - 1EA